





Welcome Message



Dear all,

Our school community is a place where every individual is valued and every potential is limitless. As we journey together, remember to embrace challenges with courage, tackle obstacles with determination, and step out of your comfort zone for growth. Let us strive for academic excellence, nurture our passions, support one another, and build a culture rooted in kindness and respect. With a spirit of curiosity and a willingness to dream big, we can achieve great things. Believe in yourselves, believe in each other, and trust in the incredible potential of our collective efforts. Together, there are no limits to what we can accomplish.

Wishing you all success and growth,

Maria S. Nemat

IB School Head

The Choice School, Kochi



Vision

At The Choice School, we envision a passionate learning community that fosters a growth mindset for every student in a happy, caring and stimulating environment, providing them with equal opportunities to discover and develop aptitude and attitude for learning in an equitable environment that inspires and ignites curiosity, creativity and confidence to transform lives and the world.

Mission

The Choice School, anchored in Knowledge, Character and Health (KCH), provides a safe, inclusive, holistic learning environment in an evolving, diverse world by equipping the students with scientific temperament and social skills to become global citizens in collaboration with a competent, supportive community.






IB Mission Statement

The International Baccalaureate aims to develop inquiring, knowledgeable and caring young people who help to create a better and more peaceful world through intercultural understanding and respect. To this end the organization works with schools, governments and international organizations to develop challenging programmes of international education and rigorous assessment. These programmes encourage students across the world to become active, compassionate and lifelong learners who understand that other people, with their differences, can also be right.

Overview of the International Baccalaureate (IB) Programmes at The Choice School


The International Baccalaureate (IB) is a globally recognized educational framework dedicated to developing inquiring, knowledgeable, and compassionate young individuals. At The Choice School, we proudly offer a comprehensive suite of IB programmes that foster academic excellence, personal growth, and intercultural understanding.



Primary Years Programme (PYP):

The PYP caters to students aged 3-12 and nurtures young learners to become active participants in their education. By focusing on the development of the whole child, the PYP encourages students to inquire both within the classroom and in the world beyond.

For students aged 11-16, the MYP provides a challenging and engaging curriculum that bridges traditional subjects with real-world applications. This programme emphasizes intellectual development and practical connections, fostering critical thinking and reflective learning.



Middle Years Programme (MYP):



Diploma Programme (DP):

Aimed at students aged 16-19, the DP is renowned for its rigorous academic standards and comprehensive curriculum, which balances breadth and depth of knowledge. Recognized by leading universities worldwide, the DP cultivates students who excel academically while developing physically, emotionally, and ethically.

At The Choice School, our commitment to the IB ethos creates a supportive and enriching environment. We emphasize holistic education, critical thinking, and a lifelong love of learning, ensuring our students are well-prepared to thrive in a global society with confidence and integrity.

Core Components of the Curriculum at The Choice School

At The Choice School, our curriculum is designed to cultivate exceptional, globally-minded students who are ready to excel in all areas of life. We ignite curiosity by encouraging critical thinking across subjects, helping students to understand and question the world around them. Our program integrates creative projects, physical activities, and community service, ensuring students grow personally and socially. Through independent research projects, students gain invaluable skills and deepen their knowledge. We focus on essential skills like problem-solving, communication, and self-management, preparing students to be confident, self-directed learners. Additionally, our curriculum connects learning to global issues, fostering international awareness and responsibility.



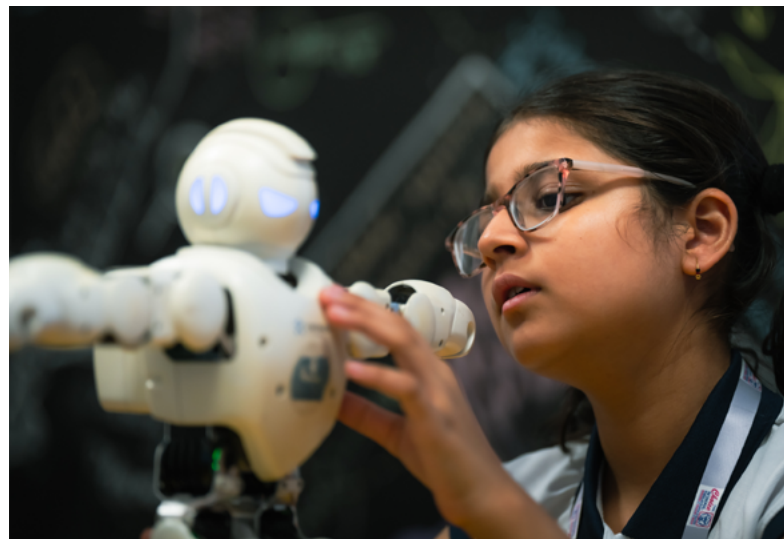
Key Features of PYP Learning in Choice: Transdisciplinary Learning

Students are encouraged to make connections between different subjects and apply their learning in real-world contexts. Through the transdisciplinary units like:

- Who we are
- Where we are in place and time
- How we express ourselves
- How the world works
- How we organise ourselves
- Sharing the planet

The transdisciplinary themes are incorporated into the curriculum through a combination of subjects, including English, Math, Science, Social Studies, Language Acquisition, Art and PSPE (Physical, Social, and Personal Education) and additional activities like STEM, gamification and cooking. The curriculum is designed to include activities that are directly linked to the concepts explored in the unit of inquiry.

- Emphasizes student-driven inquiry, encouraging curiosity and independent learning.
- Teachers guide and support students in formulating their own questions, investigating answers and reflecting on their findings.



Key Features of MYP

The Choice School's MYP programmes deliver a vibrant and all-encompassing education, meticulously crafted to inspire and equip students for a prosperous future.



English Language and Literature

Students engage deeply with complex texts, developing advanced analytical and critical thinking skills that foster a profound appreciation for literature.

Language Acquisition

Courses in French, Hindi and Malayalam enhance communication skills and cultural understanding, empowering students to thrive in a globalized world.

Sciences

Biology, Chemistry, and Physics offer hands-on exploration and scientific inquiry, promoting a solid foundation in understanding the natural world through experimentation and analysis.

Individuals and Societies

The learners explore human behavior, cultures, societies, and environments in combination with the elements of history, geography, economics, and civics understand the connections between people, events, and the world around them.

Mathematics

From Mathematical Studies to higher-level mathematics, our courses build essential problem-solving and analytical skills, preparing students for academic and career success.

Design

The Design course integrates creativity with practical problem-solving, equipping students with skills to innovate and tackle real-world challenges.

Physical and Health Education

This programme promotes physical fitness and a balanced lifestyle, ensuring students maintain their well-being and develop healthy habits.

Arts

Our Visual Arts, Music, and Theatre programmes nurture creativity and artistic expression, allowing students to explore their talents and develop a well-rounded education.

Key Features of DP

Group 1 Language & Literature

English Language and Literature

Higher Level (HL) - Standard Level (SL)

Group 2 Language Acquisition

Spanish - French - Hindi Language B & Ab Initio

Standard Level (SL)

Group 3 Individuals & Society

Business - Psychology - Global Politics - Economic - Environmental Science

Higher Level (HL) - Standard Level (SL)

Group 4 Sciences

Physics - Biology - Chemistry - Environmental Science

Higher Level (HL) - Standard Level (SL)

Group 5 Mathematics

Applications and Interpretations (AI) - Analysis and Approaches (AA)

Higher Level (HL) - Standard Level (SL)

Group 6 Arts

Visual Arts - Theatre

Standard Level (SL)



In addition to these subjects, our core components of DP enrich the IB experience:



Creativity, Activity, Service (CAS):

Encourages students to engage in diverse activities, community service, and personal growth, fostering well-rounded development and social responsibility.



Theory of Knowledge (TOK):

This course challenges students to reflect on the nature of knowledge and understanding, promoting critical thinking and intellectual curiosity.



Extended Essay (EE) and Personal Project:

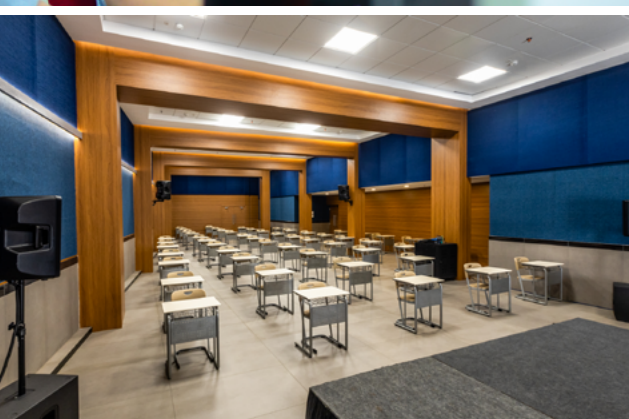
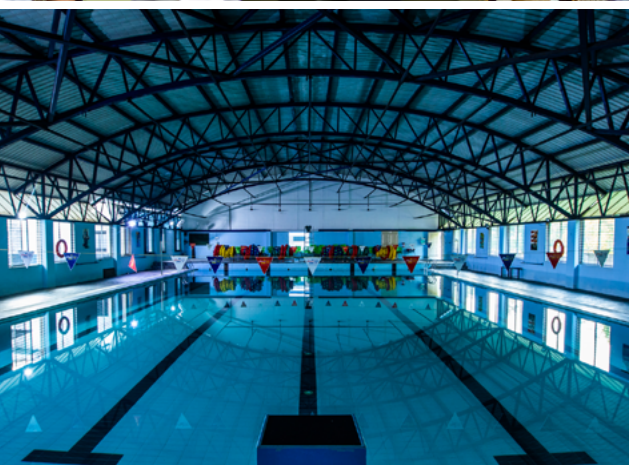
Provide opportunities for in-depth research and personal inquiry, allowing students to explore their interests and develop independent learning skills.

At The Choice School, these elements come together to ensure a rigorous, engaging, and holistic education that prepares students for academic excellence and meaningful global contributions.



Coaching Sessions

We are dedicated to helping each student reach their full potential. Our personalized coaching sessions provide tailored guidance to support academic success, personal development, and emotional well-being. Through one-on-one and group sessions, students receive expert advice on setting goals, overcoming challenges, and developing strategies to excel in both their studies and personal endeavors. These sessions are designed to empower students with the tools and confidence they need to thrive.



Facilities

The Choice School is proud of its state-of-the-art facilities designed to support and enhance every aspect of student learning and development. Our modern classrooms are equipped with advanced technology and interactive tools, creating an engaging and dynamic learning environment.

The school features dedicated science laboratories for Biology, Chemistry, and Physics, where students can conduct experiments and explore scientific concepts hands-on. Our creative spaces include fully equipped art studios, music rooms, and a performing arts theater, providing ample opportunities for artistic expression and performance.

For technology and design, we offer cutting-edge computer labs and design studios, enabling students to engage in digital projects and innovative design work. Our well-resourced library and study areas provide a quiet space for research and reflection.

Physical education is supported by spacious gyms, outdoor sports fields, and dedicated areas for fitness and wellness activities, promoting a healthy and active lifestyle.

At The Choice School, our facilities are designed to inspire and support students in achieving their full potential, ensuring a comprehensive and enriching educational experience.

Serving Humanity, Building Futures: Service As Action & CAS

At The Choice School, community and culture are at the heart of our educational philosophy, aligning closely with the IB's core objective of fostering responsible global citizens. Our vibrant and inclusive environment emphasizes collaboration, respect, and diversity, creating a strong sense of belonging for students, staff, and families. Central to our approach are the Creativity, Activity, and Service (CAS) components in the DP and Service As Action in the MYP, which encourage students to engage in meaningful community service and personal growth. By integrating these learning experiences into our curriculum, we not only promote academic excellence but also nurture students' development into compassionate, internationally-minded individuals. Through community-focused initiatives and cultural celebrations, we prepare our students to make a positive impact on a global scale.



Counselling and Learning Support

The Choice School is dedicated to providing comprehensive support for all students through our robust counselling and learning support services. Our experienced counsellors offer guidance on academic, personal, and career-related matters, helping students from MYP1 navigate challenges and make informed decisions about their futures. Additionally, our learning support team provides individualized assistance to students with diverse learning needs, ensuring that every student has access to the resources and strategies necessary for success. We work collaboratively with students, parents, and teachers to create personalized support plans that address specific needs and promote academic and emotional well-being.

Admissions

The application process at The Choice School is designed to be straightforward and welcoming, ensuring that prospective students and their families can easily navigate their journey to join our community. To begin, interested families should complete an online application form, providing essential information about the student's background and academic history. Our admissions team is available to guide families through each step of the process, from initial inquiry to enrollment. We encourage prospective students to visit our campus, experience our facilities, and meet with our staff to get a true sense of what The Choice School has to offer.

Meet the Team





Contact

Toll Free: 1800 2745500

Admissions:

+91 8086077800

+91 8086398080

The Choice School, Tripunithura
Nadama East Tripunithura – 682301
Cochin, Kerala

admschool@choicegroup.in
0484 2775692 / 0484 2779057

Kinderland - Kochi, Tripunithura
Nadama East Tripunithura
Kochi 682301, Kerala

kgadmin@choicegroup.in
0484 2775692 / 0484 2779057

